

*Adaptation of Irrigated agriculture to Climate change –
AICHA-ATCHA Workshop. 14th-19th November 2016
at IISc Civil Engineering Department – Bangalore*

Integrated Modelling under the RECORD platform

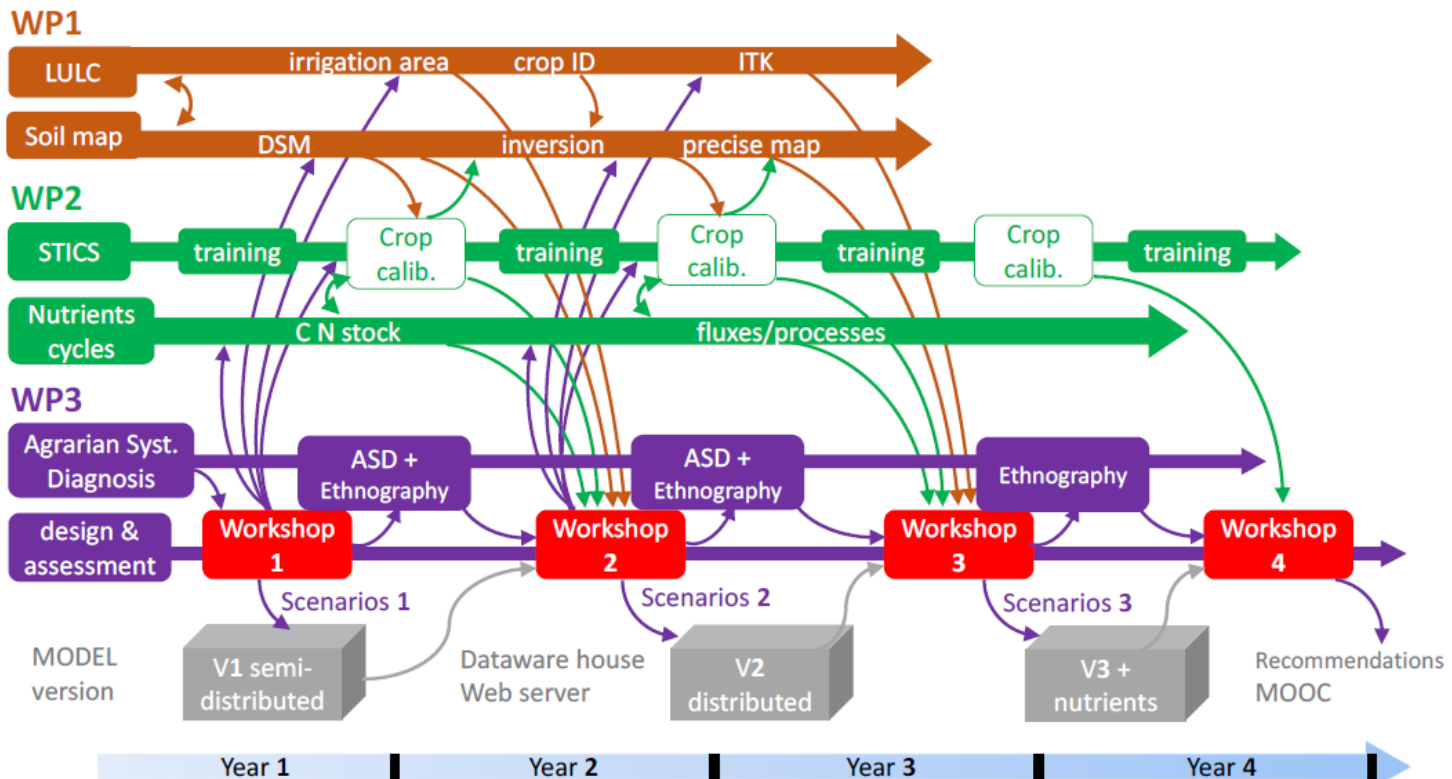
H.Raynal – E.Casellas U875 MIAT – INRA Toulouse



Objectives

Task 4.2: Integrated modelling under the RECORD platform

- Implement successive versions of the integrated model
 - AICHA 2D prototype → ATCHA V1: semi distributed version of the model
 - ATCHA V1 → ATCHA V2: fully distributed model
 - ATCHA V2 → ATCHA V3: by including nutrient cycle
- Information system (datawarehouse) in order to:
 - manage data used to feed models and for pseudo validation.
 - manage the different software version of the models





Human resources

Software engineer – 24 months – April 2017 → March 2019

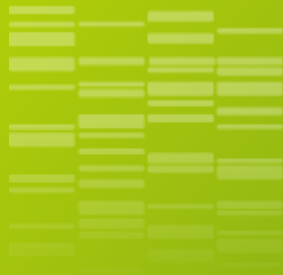
- Packaging of software components
- Participation to software development ATCHAV1 & ATCHAV2
- Development of the information system
- Participation to the scenario simulations

+

Engineers RECORD platform (Eric & Helene)

+

Other software engineers involved in AICHA and/or ATCHA
(P.Casel, S.Cézera)

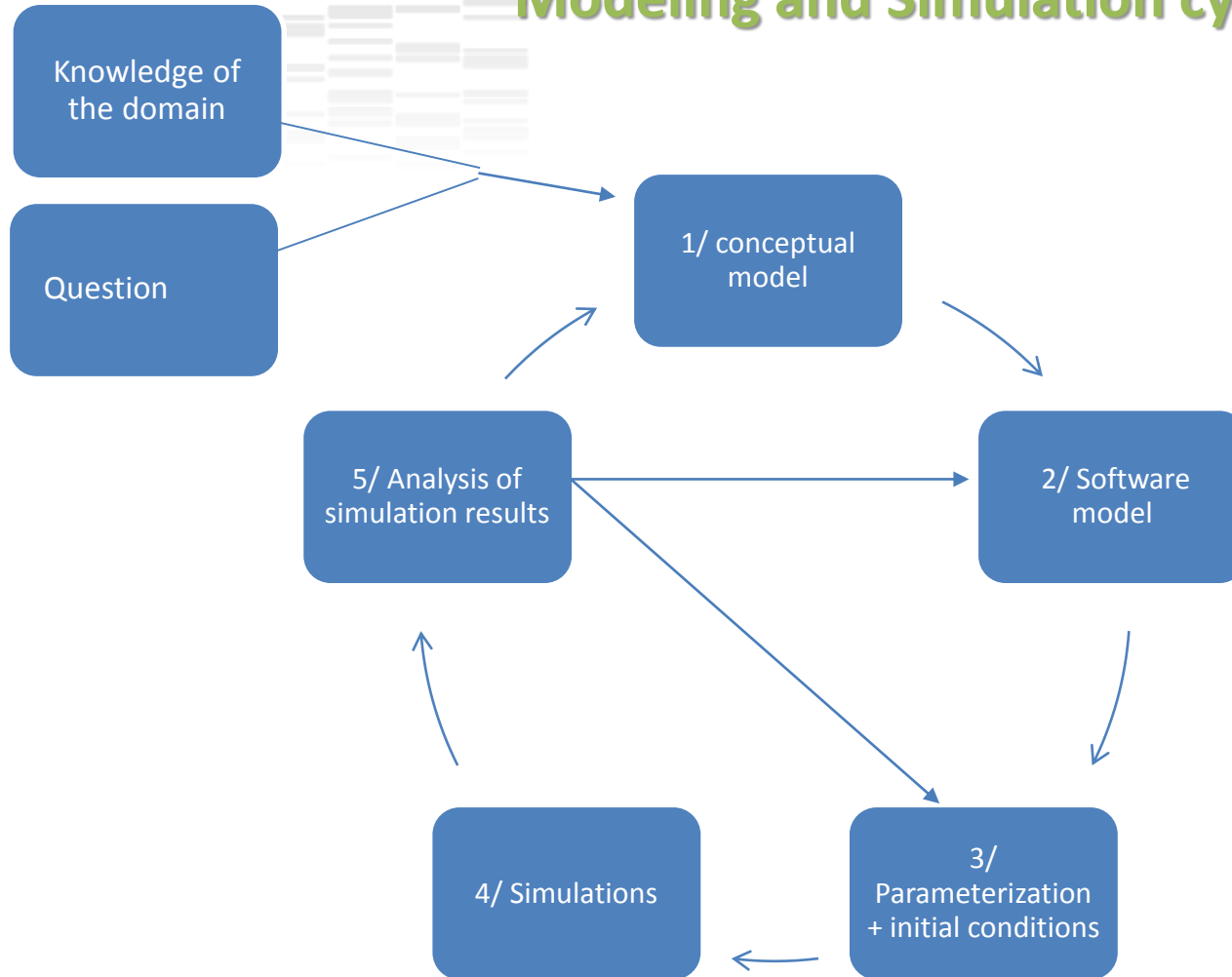


Modelling activity

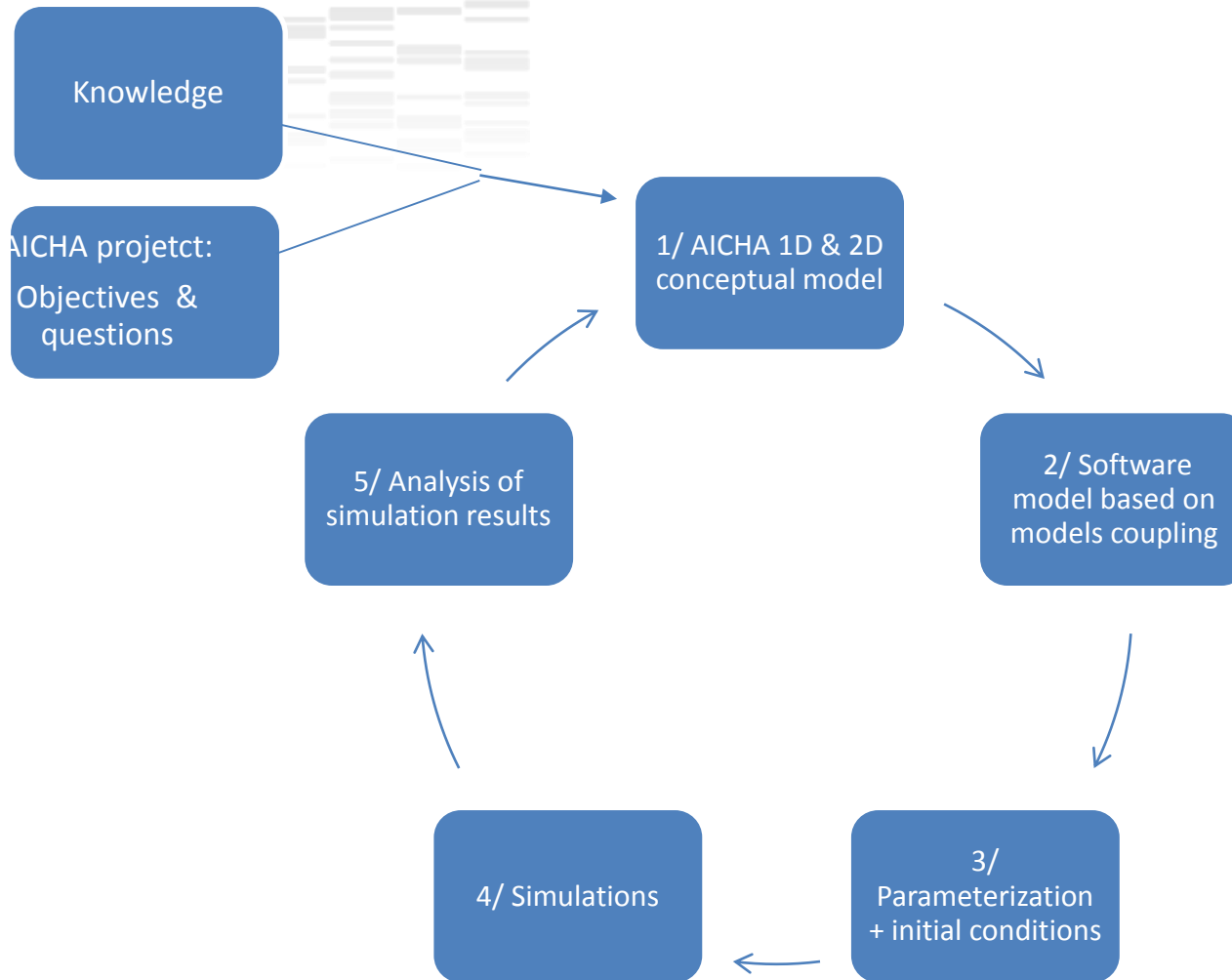


Methodology used to develop the different coupled model version:

Modeling and Simulation cycle



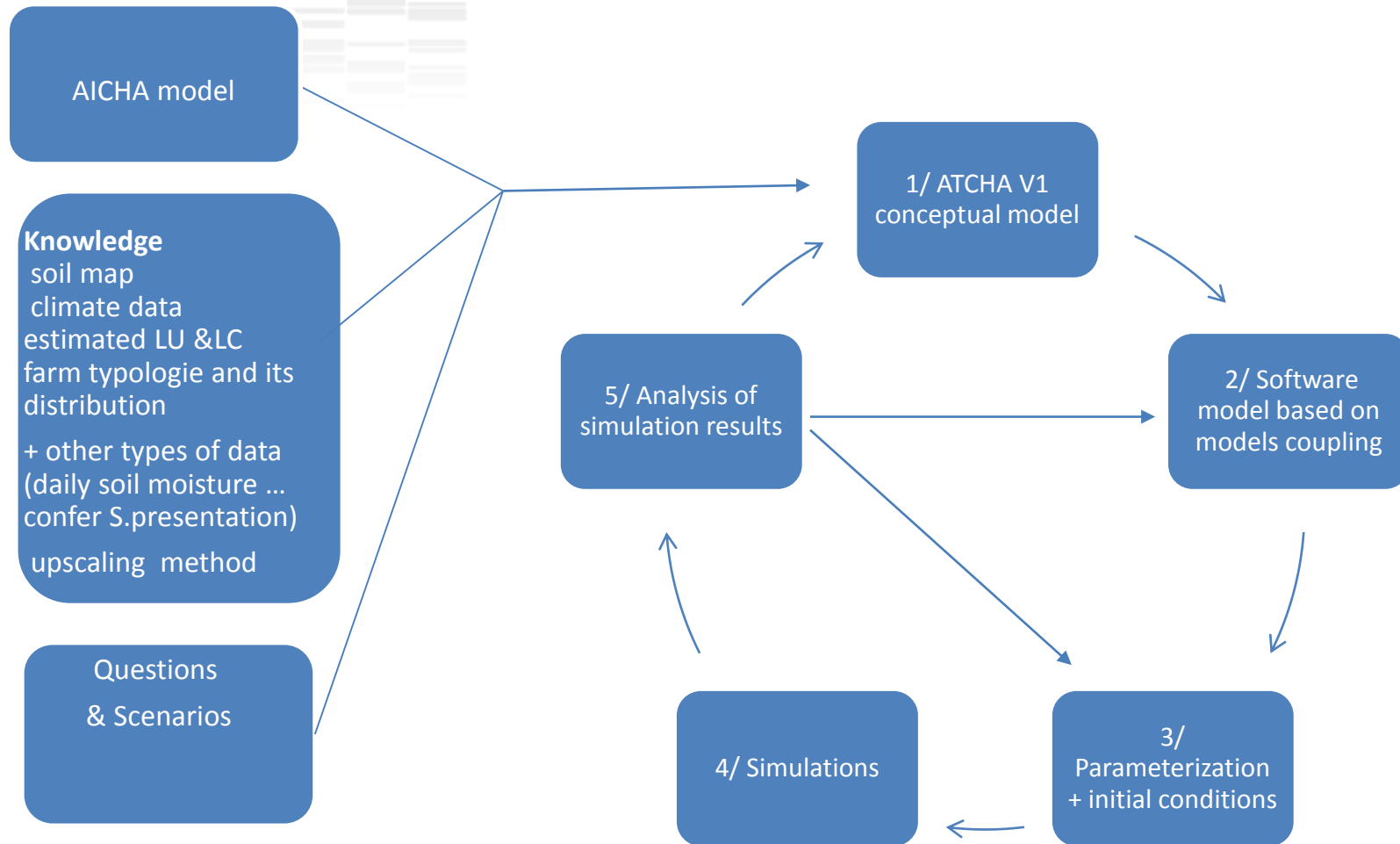
Applied to AICHA Model



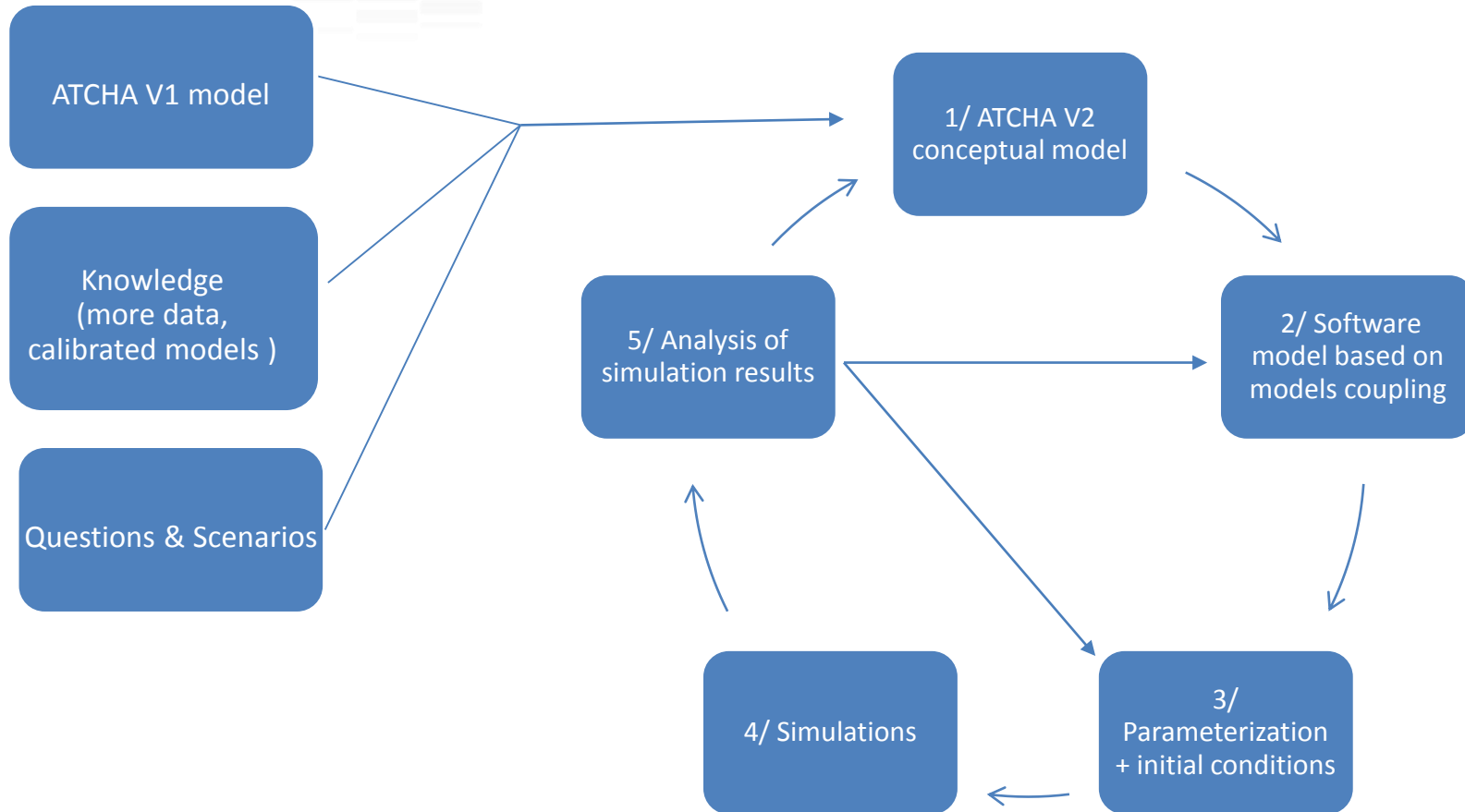
proof of concept
1st round not completely
done

Questions?
to run simulations on past
data
to run simulations based on
a simple scenario (example
« change the ratio
rainfed/irrigated crops)

Applied to ATCHA V1 Model



Applied to ATCHA V2 Model



Partnership and connections with other tasks

- **Strong interactions with WP3** , task 3.1: scenario design and assessment
 - To design scenarios to be simulated by the different coupled models
 - To specify (if needed) interfaces to the coupled model, in order to ease its use
 - For results analysis

- **Interactions with modellers and people who will calibrate models:**

→ STICS:

new crops, calibration of the model including nitrogen – Tasks 2.1 and 2.2

new salinity module and its calibration – Task 2.2

→ AMBHAS: calibration, values for parameters. Who is in charge of this model?

- **Interactions with WP1 « data providers »**

→ to provide data for initialisation, parameterization, and validation of the coupled models

Land Use and land cover → Task 1.1

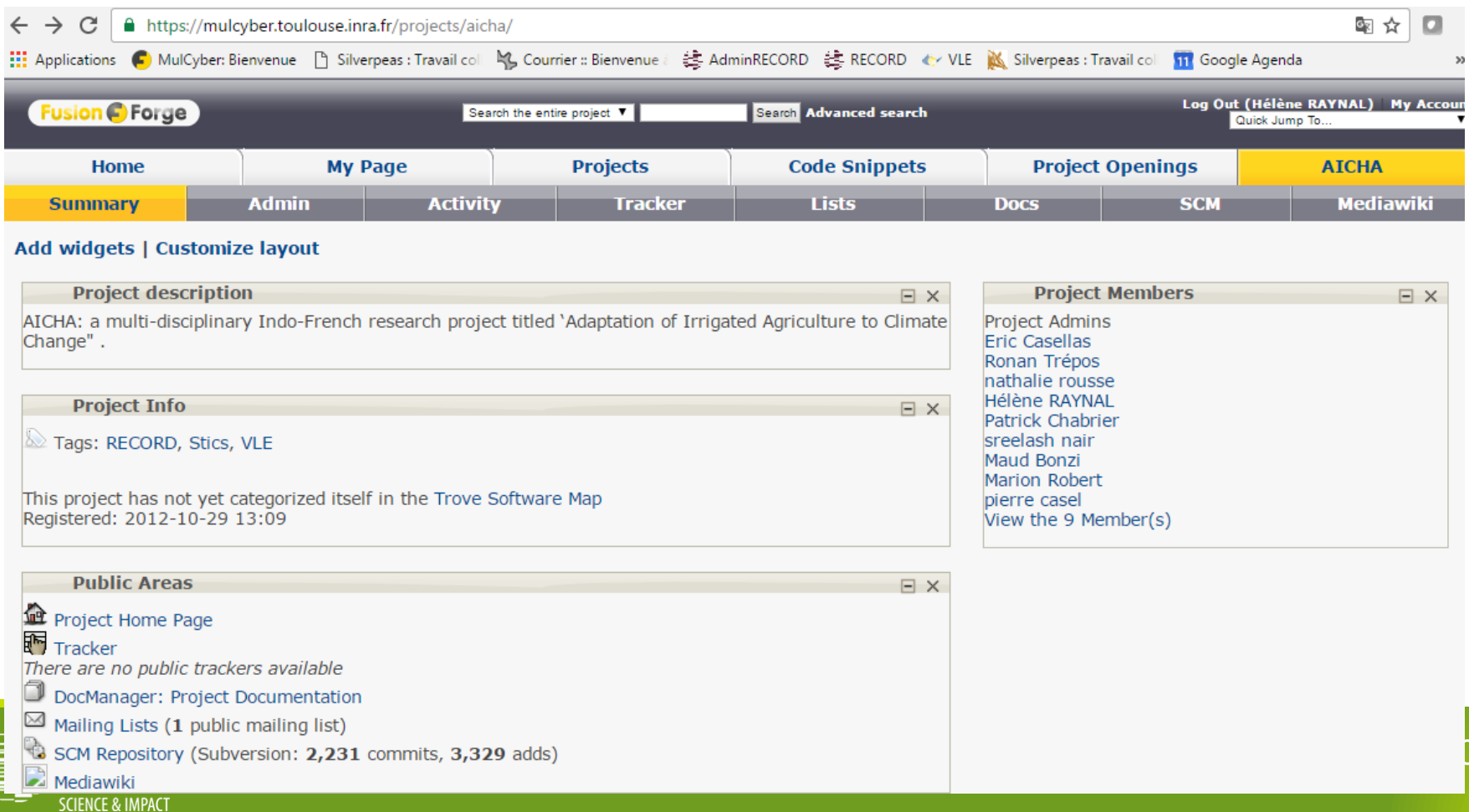
Improved soil map → Task 1.2

Collaborative tools

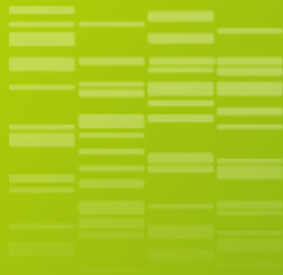
- **“Forge ATCHA”**

Forge: a web-based collaborative software platform for both developing and sharing computer applications.

Includes the versioning of the different models.



The screenshot displays the Forge ATCHA web interface. The browser address bar shows the URL <https://mulcyber.toulouse.inra.fr/projects/aicha/>. The page features a navigation bar with tabs for Home, My Page, Projects, Code Snippets, Project Openings, and ATCHA (highlighted in yellow). Below this is a sub-navigation bar with tabs for Summary, Admin, Activity, Tracker, Lists, Docs, SCM, and Mediawiki. The main content area includes a search bar, a 'Log Out (Hélène RAYNAL)' button, and a 'Quick Jump To...' dropdown. A 'Add widgets | Customize layout' link is present. The interface contains several widget panels: 'Project description' (describing AICHA as a multi-disciplinary Indo-French research project), 'Project Info' (showing tags like RECORD, Stics, VLE and registration details), 'Project Members' (listing project admins and members), and 'Public Areas' (listing links to Project Home Page, Tracker, DocManager, Mailing Lists, SCM Repository, and Mediawiki). The SCM Repository section indicates 2,231 commits and 3,329 adds. The footer of the page reads 'SCIENCE & IMPACT'.



Data for models

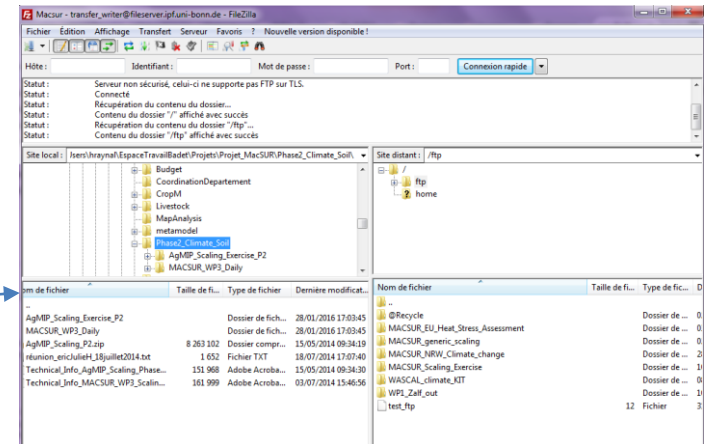
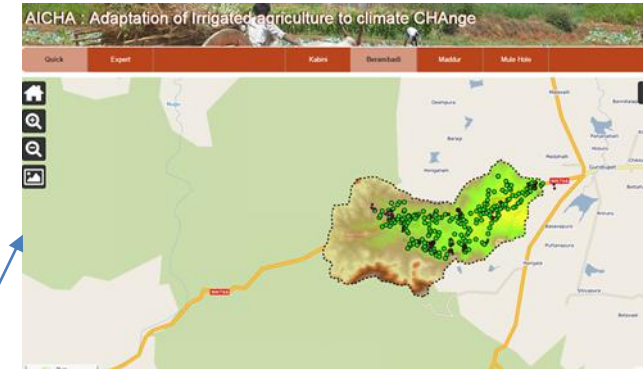


Data

- **Information system will be developed in order to:**

- Have an **inventory of data** available for the project
- **Share data:**
 - data required by the modelling activity (and beyond)
 - simulations results

- **Gather data** required by modelling activity on identified locations.
 - GeoSAS → for spatialized data
 - ftp server → for others. (access to define- Web interface)

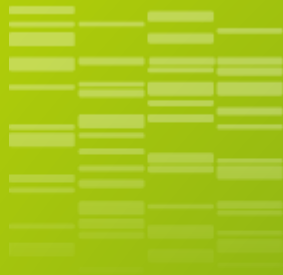


- **Check quality of data**
 - R routines will be developed



Data

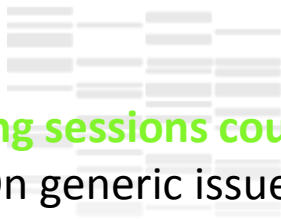
- **Organize and characterize data**
 - By associating **metadata** to the data
 - metadata are informations that provide information about other data
 - These metadata characterize when and how the data have been collected, units and also semantic of the data.
 - Try **to be compliant with standards** shared by different communities.
Some examples of standards:
 - Inspire: <http://inspire.ec.europa.eu/> to combine spatial data and services from different sources across the European Community in a consistent way without involving specific efforts of humans or machines.
 - AGROVOC <http://aims.fao.org/vest-registry/vocabularies/agrovoc-multilingual-agricultural-thesaurus>.
AGROVOC is a controlled vocabulary covering all areas of interest of the Food and Agriculture Organization ([FAO](#)) of the United Nations, including food, nutrition, agriculture, fisheries, forestry, environment etc



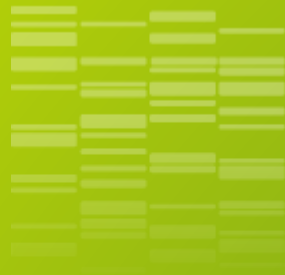
Dissemination and building capacity

(linked to task 4.3)





- **Training sessions could be organized:**
 - On generic issues such as coupling models, develop decision model ...
 - On specific issues linked to the use of ATCHA model (or simplified version of ATCHA models)
- **Different types:**
 - MOOC (on line courses)
 - In Bangalore, connected to WS event.



Thank you for your attention

